



**THE RITZ-CARLTON
RESIDENCES**

PARADISE VALLEY

RC 2 - MAIN LEVEL

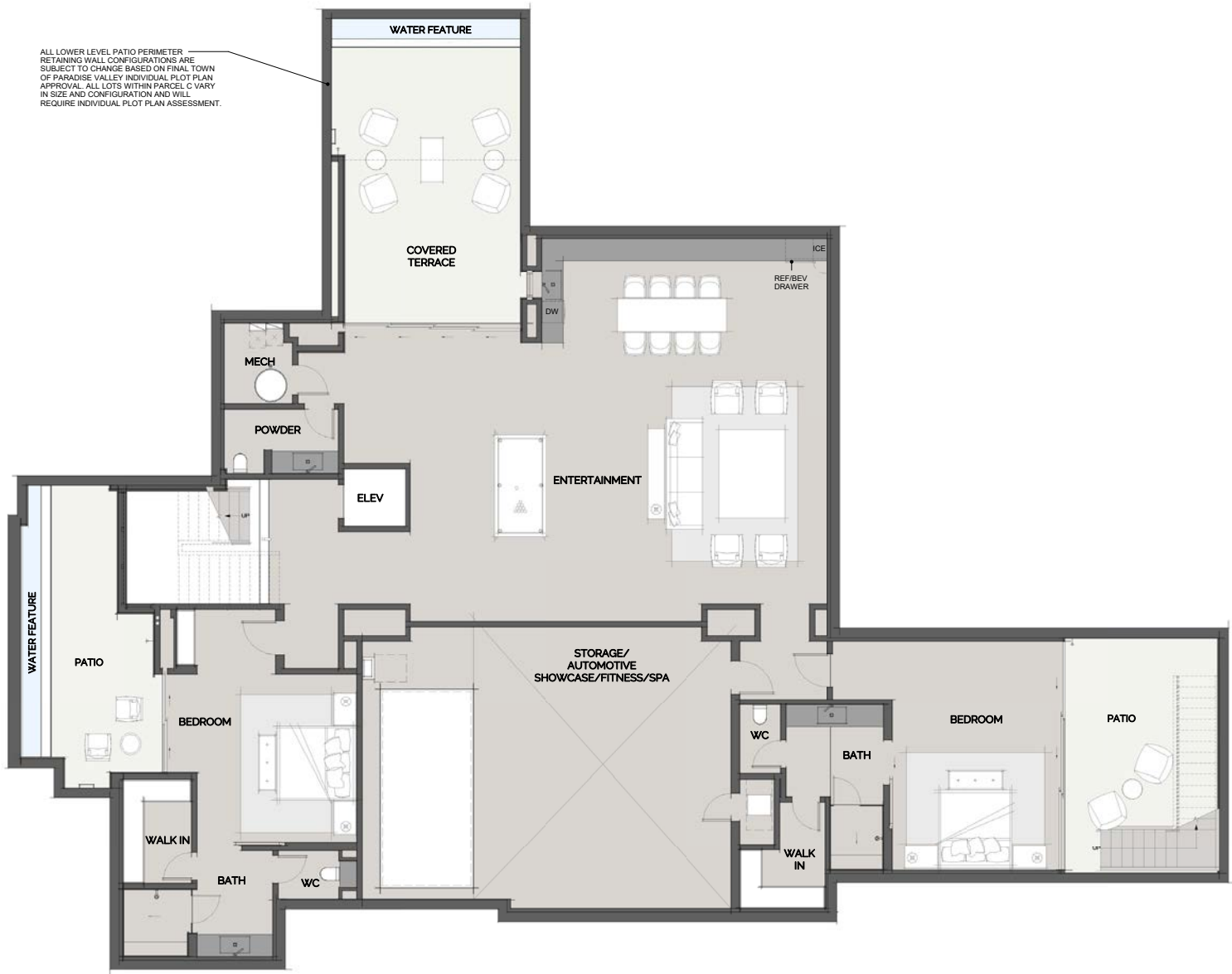
RC-2	
LARGE BASEMENT	SMALL BASEMENT
LOWER - 3,270 SF	1,452 SF
LOWER SHOWCASE - 933 SF	0 SF
MAIN - 4,167 SF	4,167 SF
UPPER - 1,754 SF	1,754 SF
TOTAL - 10,124 SF	OR 7,373 SF

* All outdoor spaces are represented for discussion purposes only. Final layouts and design to be determined by buyer.



Offered by The Solvare Group, LLC (AZ DRE #LC631297000). The Ritz-Carlton Residences, Paradise Valley are not owned, developed or sold by The Ritz-Carlton Hotel Company, L.L.C. or its affiliates ("Ritz-Carlton"). FSPV Parcel C, LLC and its affiliates ("Developer") use The Ritz-Carlton marks under a license from Ritz-Carlton, which has not confirmed the accuracy of any of the statements or representations made herein. Square footages are gross measurements based on architectural plans and may vary based on location of unit. All renderings contained herein are artist impressions, conceptual interpretations, merely intended as illustration and all depicted improvements are proposed only and are not in existence. No guarantee is made that the described features, services, amenities or facilities will be available or built. Developer reserves the right to make any modifications, revisions or withdrawals in its sole discretion and without prior notice. THE IMPROVEMENTS DESCRIBED HEREIN ARE PROPOSED ONLY AND NO WARRANTY IS GIVEN OR IMPLIED THAT THE IMPROVEMENTS WILL BE COMPLETED. ORAL REPRESENTATIONS CANNOT BE RELIED UPON AS CORRECTLY STATING REPRESENTATIONS OF THE DEVELOPER. FOR CORRECT REPRESENTATIONS, MAKE REFERENCE TO THE DOCUMENTS THAT ARE REQUIRED BY ARIZONA REVISED STATUTES, 32-2181, et seq. TO BE FURNISHED BY A DEVELOPER TO A BUYER OR LESSEE. This is not an offer of real estate for sale or solicitation of an offer to buy, to residents of any state, province or other jurisdiction where the project is not registered in accordance with applicable law or where such offering or solicitation would otherwise be prohibited by law. Void where prohibited. No sales will occur until permitted by the Arizona Department of Real Estate; all sales are conditioned upon the issuance by the Arizona Department of Real Estate of a Disclosure Report for the community and buyers' receipt and acceptance of the Disclosure Report. Only lot reservations will be accepted by Developer, and only as permitted by the Arizona Department of Real Estate, until the Disclosure Report for the development has been issued; provided, further, that Developer is under no obligation to accept reservations.





**THE RITZ-CARLTON
RESIDENCES**

PARADISE VALLEY

RC 2 - LOWER LEVEL - LARGE OPTION

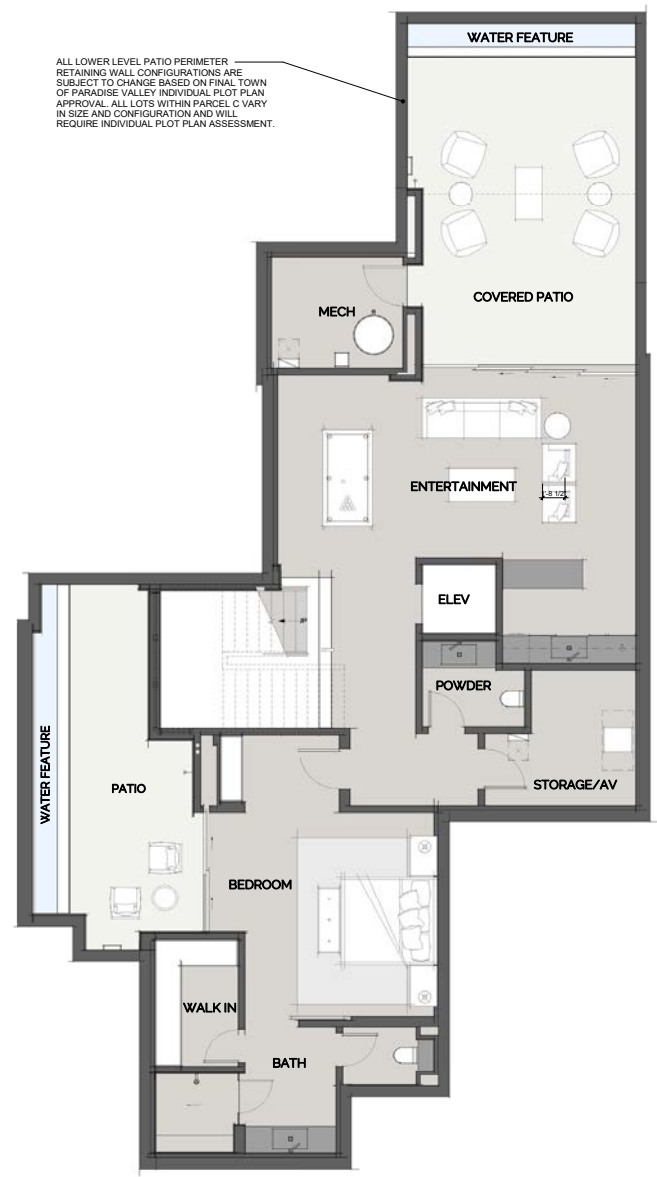
RC-2	
LARGE BASEMENT*	SMALL BASEMENT*
LOWER - 3,269 SF	1,360 SF
LOWER SHOWCASE - 048 SF	0 SF
MAIN - 4,166 SF	4,166 SF
UPPER - 1,754 SF	1,754 SF
TOTAL - 10,137 SF	OK 7,280 SF

* All outdoor spaces are represented for discussion purposes only. Final layouts and design to be determined by buyer.



Offered by The Solvare Group, LLC (AZ DRE #LC631297000). The Ritz-Carlton Residences, Paradise Valley are not owned, developed or sold by The Ritz-Carlton Hotel Company, L.L.C. or its affiliates ("Ritz-Carlton"). ESPV Parcel C, LLC and its affiliates ("Developer") use The Ritz-Carlton marks under a license from Ritz-Carlton, which has not confirmed the accuracy of any of the statements or representations made herein. Square footages are gross measurements based on architectural plans and may vary based on location of unit. All renderings contained herein are artist impressions, conceptual interpretations, merely intended as illustration and all depicted improvements are proposed only and are not in existence. No guarantee is made that the described features, services, amenities or facilities will be available or built. Developer reserves the right to make any modifications, revisions or withdrawals in its sole discretion and without prior notice. THE IMPROVEMENTS DESCRIBED HEREIN ARE PROPOSED ONLY AND NO WARRANTY IS GIVEN OR IMPLIED THAT THE IMPROVEMENTS WILL BE COMPLETED. ORAL REPRESENTATIONS CANNOT BE RELIED UPON AS CORRECTLY STATING REPRESENTATIONS OF THE DEVELOPER. FOR CORRECT REPRESENTATIONS, MAKE REFERENCE TO THE DOCUMENTS THAT ARE REQUIRED BY ARIZONA REVISED STATUTES, 32-2181, et seq. TO BE FURNISHED BY A DEVELOPER TO A BUYER OR LESSEE. This is not an offer of real estate for sale or solicitation of an offer to buy, to residents of any state, province or other jurisdiction where the project is not registered in accordance with applicable law or where such offering or solicitation would otherwise be prohibited by law. Void where prohibited. No sales will occur until permitted by the Arizona Department of Real Estate; all sales are conditioned upon the issuance by the Arizona Department of Real Estate of a Disclosure Report for the community and buyers' receipt and acceptance of the Disclosure Report. Only lot reservations will be accepted by Developer, and only as permitted by the Arizona Department of Real Estate, until the Disclosure Report for the development has been issued; provided, further, that Developer is under no obligation to accept reservations.





**THE RITZ-CARLTON
RESIDENCES**

PARADISE VALLEY

RC 2 - LOWER LEVEL - SMALL OPTION

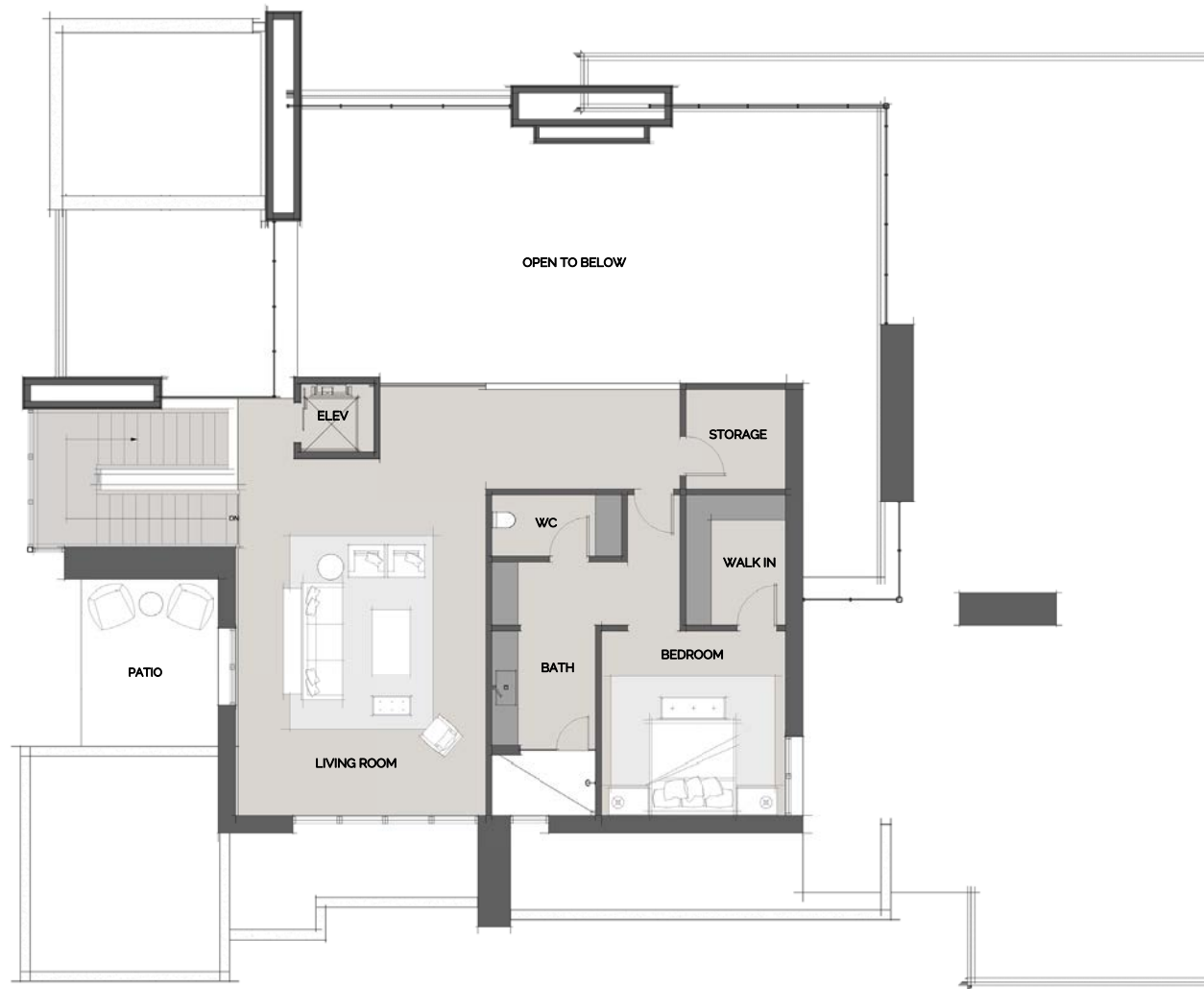
RC-2	
LARGE BASEMENT	SMALL BASEMENT
LOWER - 3,270 SF	1,452 SF
LOWER SHOWCASE - 933 SF	0 SF
MAIN - 4,167 SF	4,167 SF
UPPER - 1,754 SF	1,754 SF
TOTAL - 10,124 SF	OR 7,373 SF

* All outdoor spaces are represented for discussion purposes only. Final layouts and design to be determined by buyer.



Offered by The Solvare Group, LLC (AZ DRE #LC631297000). The Ritz-Carlton Residences, Paradise Valley are not owned, developed or sold by The Ritz-Carlton Hotel Company, L.L.C. or its affiliates ("Ritz-Carlton"). FSPV Parcel C, LLC and its affiliates ("Developer") use The Ritz-Carlton marks under a license from Ritz-Carlton, which has not confirmed the accuracy of any of the statements or representations made herein. Square footages are gross measurements based on architectural plans and may vary based on location of unit. All renderings contained herein are artist impressions, conceptual interpretations, merely intended as illustration and all depicted improvements are proposed only and are not in existence. No guarantee is made that the described features, services, amenities or facilities will be available or built. Developer reserves the right to make any modifications, revisions or withdrawals in its sole discretion and without prior notice. THE IMPROVEMENTS DESCRIBED HEREIN ARE PROPOSED ONLY AND NO WARRANTY IS GIVEN OR IMPLIED THAT THE IMPROVEMENTS WILL BE COMPLETED. ORAL REPRESENTATIONS CANNOT BE RELIED UPON AS CORRECTLY STATING REPRESENTATIONS OF THE DEVELOPER. FOR CORRECT REPRESENTATIONS, MAKE REFERENCE TO THE DOCUMENTS THAT ARE REQUIRED BY ARIZONA REVISED STATUTES, 32-2181, et seq. TO BE FURNISHED BY A DEVELOPER TO A BUYER OR LESSEE. This is not an offer of real estate for sale or solicitation of an offer to buy, to residents of any state, province or other jurisdiction where the project is not registered in accordance with applicable law or where such offering or solicitation would otherwise be prohibited by law. Void where prohibited. No sales will occur until permitted by the Arizona Department of Real Estate; all sales are conditioned upon the issuance by the Arizona Department of Real Estate of a Disclosure Report for the community and buyers' receipt and acceptance of the Disclosure Report. Only lot reservations will be accepted by Developer, and only as permitted by the Arizona Department of Real Estate, until the Disclosure Report for the development has been issued; provided, further, that Developer is under no obligation to accept reservations.





**THE RITZ-CARLTON
RESIDENCES**

PARADISE VALLEY

RC 2 - UPPER LEVEL

RC-2	
LARGE BASEMENT	SMALL BASEMENT
LOWER - 3,270 SF	1,452 SF
LOWER SHOWCASE - 933 SF	0 SF
MAIN - 4,167 SF	4,167 SF
UPPER - 1,754 SF	1,754 SF
TOTAL - 10,124 SF	OR 7,373 SF



Offered by The Solvere Group, LLC (AZ DRE #LC631297000). The Ritz-Carlton Residences, Paradise Valley are not owned, developed or sold by The Ritz-Carlton Hotel Company, L.L.C. or its affiliates ("Ritz-Carlton"). ESPV Parcel C, LLC and its affiliates ("Developer") use The Ritz-Carlton marks under a license from Ritz-Carlton, which has not confirmed the accuracy of any of the statements or representations made herein. Square footages are gross measurements based on architectural plans and may vary based on location of unit. All renderings contained herein are artist impressions, conceptual interpretations, merely intended as illustration and all depicted improvements are proposed only and are not in existence. No guarantee is made that the described features, services, amenities or facilities will be available or built. Developer reserves the right to make any modifications, revisions or withdrawals in its sole discretion and without prior notice. THE IMPROVEMENTS DESCRIBED HEREIN ARE PROPOSED ONLY AND NO WARRANTY IS GIVEN OR IMPLIED THAT THE IMPROVEMENTS WILL BE COMPLETED. ORAL REPRESENTATIONS CANNOT BE RELIED UPON AS CORRECTLY STATING REPRESENTATIONS OF THE DEVELOPER. FOR CORRECT REPRESENTATIONS, MAKE REFERENCE TO THE DOCUMENTS THAT ARE REQUIRED BY ARIZONA REVISED STATUTES, 32-2181, et seq. TO BE FURNISHED BY A DEVELOPER TO A BUYER OR LESSEE. This is not an offer of real estate for sale or solicitation of an offer to buy, to residents of any state, province or other jurisdiction where the project is not registered in accordance with applicable law or where such offering or solicitation would otherwise be prohibited by law. Void where prohibited. No sales will occur until permitted by the Arizona Department of Real Estate; all sales are conditioned upon the issuance by the Arizona Department of Real Estate of a Disclosure Report for the community and buyers' receipt and acceptance of the Disclosure Report. Only lot reservations will be accepted by Developer, and only as permitted by the Arizona Department of Real Estate, until the Disclosure Report for the development has been issued; provided, further, that Developer is under no obligation to accept reservations.

